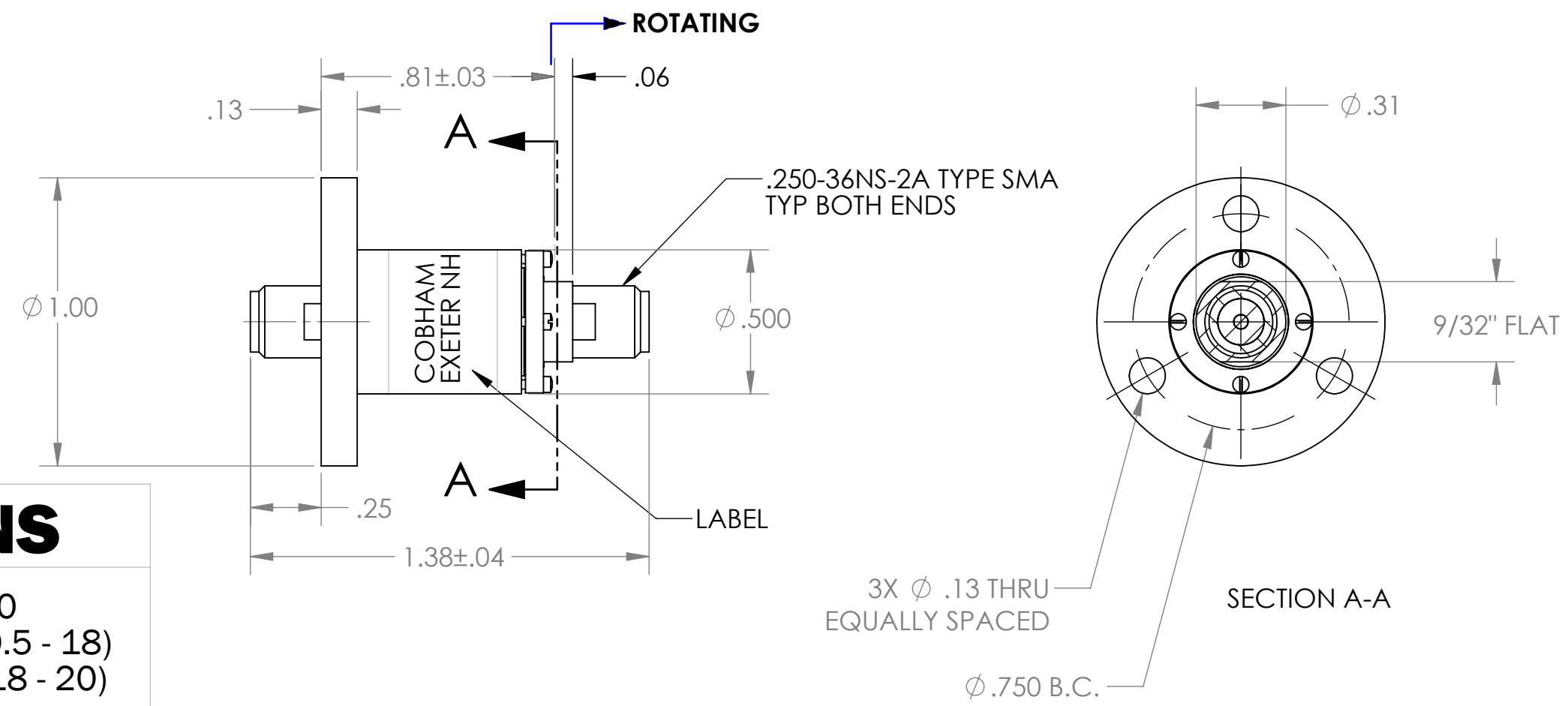


THIS DOCUMENT AND ALL INFORMATION THEREIN CONTAINED ARE EXCLUSIVE PROPERTY OF COBHAM, THE RECIPIENT AGREES NOT TO REPRODUCE OR DISTRIBUTE TO ANY THIRD PARTY WITHOUT THE PRIOR WRITTEN CONSENT OF COBHAM.

REVISIONS				
ZONE	REV.	DESCRIPTION	DATE	APPROVED
	A	REDRAWN IN SOLIDWORKS ECO 7764	8/12/10	RF, KS



SPECIFICATIONS

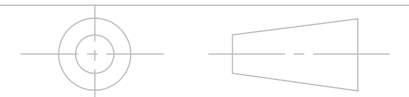
FREQUENCY (GHz)	0.5 - 20
VSWR (Max)	1.5 (0.5 - 18) 2.0 (18 - 20)
VSWR WOW/360 deg. (Max)	0.1
INSERTION LOSS (dB Max)	0.3 (0.5 - 18) 0.7 (18 - 20)
I. L. WOW (dB MAX)	0.1 (0.5 - 18) 0.15 (18 - 20)
PEAK POWER (Kw)	3 KW
AVERAGE POWER (W)	500W AT 1 GHz
ROTATION SPEED (RPM)	300
TORQUE, STARTING (MAX)	5 IN-OZ
WEIGHT (MAX)	2 OZ
MATERIAL	BRASS
FINISH	CHROMATE
LIFE	1000 HRS AT 300 RPM

UNLESS OTHERWISE SPECIFIED ALL DIMENSIONS APPLY BEFORE PLATING

INTERPRET DIMENSIONS AND TOLERANCES PER ASME Y14.5M-1994

DO NOT SCALE THIS DRAWING

THIRD ANGLE PROJECTION



UNLESS OTHERWISE SPECIFIED: DIMENSIONS ARE IN INCHES TOLERANCES		DRAWN	DATE
FRACTIONS ± 1/64	DECIMALS .X ± .030	J. FOWLER	1/26/06
ANGLES ± 1/2°	.XX ± .020 .XXX ± .005	CHECKED E. SHEA	1/31/06
MACHINE FINISH ⁶³		APPR. MECH. ENG. J. FOWLER	1/31/06
REMOVE ALL BURRS & SHARP EDGES .010 MAX.		APPR. ELECT. ENG. E. SHEA	1/31/06
		APPR. Q.C. ENG. S. O'DONNELL	1/31/06

MATERIAL	FINISH	DRAWN	DATE
		J. FOWLER	1/26/06
		E. SHEA	1/31/06
		J. FOWLER	1/31/06
		E. SHEA	1/31/06
		S. O'DONNELL	1/31/06

COBHAM Continental Microwave and Tool Company, Inc.
Dba Cobham Antenna Systems
11 Continental Drive
Exeter, NH 03833

TITLE: **OUTLINE DRAWING
SINGLE CHANNEL
COAXIAL ROTARY JOINT**

SIZE	CAGE CODE	DWG. NO.	REV
B	66544	1102/1	A

SCALE: 2:1	WEIGHT:	SHEET 1 OF 1
------------	---------	--------------